

# HDPE壓力管(PN10, PN6)及配件

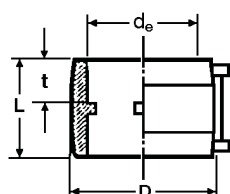
( )%

稱呼	外徑	PN10 直管	PN6 直管	90° 彎頭	45° 彎頭	三通	電焊套
1/2"	20MM	64		983	950	218	491
3/4"	25MM	90		983	950	218	502
1"	32MM	149		218	218	218	511
1 1/4"	40MM	216		281	281	358	541
1 1/2"	50MM	295		436	436	468	584
2"	63MM	436	308	632	632	667	728
2 1/2"	75MM	612	418	842	835	1,249	927
3"	90MM	880	590	1,249	1,165	1,902	1,026
4"	110MM	1,298	898	1,993	1,832	3,018	1,428
5"	125MM	1,685	1,144	2,828	2,499	4,126	2,015
6"	160MM	2,752	1,848	7,467	3,326	6,983	2,409
8"	205MM	5,315	2,904	13,240	5,319	13,096	5,303
10"	250MM	7,937	5,419	27,440			

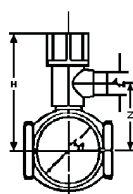
製造日期：87年6月

呎	吋	異徑三通	大小頭	丁字管鞍	呎	吋	管帽	法蘭接頭
25 × 20MM			611		20MM		211	
32 × 20MM			624		25MM		238	
32 × 25MM			615		32MM		301	774
40 × 20MM		1,404	624	3,914	40MM		330	793
40 × 25MM			624		50MM		401	841
40 × 32MM			624		63MM		526	883
50 × 20MM			687		75MM		582	1,154
50 × 25MM		1,537	687	4,162	90MM		716	1,271
50 × 32MM			687	4,162	110MM		968	1,677
50 × 40MM			687		125MM		1,352	2,047
63 × 32MM		1,997	757	4,834	160MM		1,712	2,396
63 × 40MM			757	4,834	200MM		2,442	3,724
63 × 50MM			757		250MM			10,400
75 × 40MM		2,420	800	5,009				
75 × 63MM		3,122	800					
90 × 40MM		2,989	997	5,149	呎	吋	管鞍	內牙由令
90 × 63MM		3,073	997		20MM			2,036
90 × 75MM			997		25MM			2,139
110 × 63MM		4,199	1,130	5,318	32MM			2,283
110 × 75MM		4,282	1,130		40MM			2,793
110 × 90MM		4,368	1,130		50MM		1,920	3,271
125 × 63MM		5,300	1,214	5,760	63MM		2,112	3,332
125 × 90MM		5,469	1,214		75MM		2,347	
125 × 110MM			1,214		90MM		2,680	
160 × 63MM		10,176	2,499	6,062	110MM		2,844	
160 × 125MM		10,370	2,499		125MM		3,013	
200 × 63MM		45,254		6,625	160MM		3,346	
200 × 125MM		50,820			200MM		3,854	

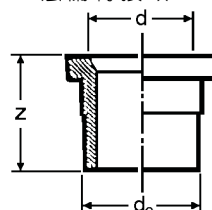
電焊套



丁字管鞍



法蘭轉接頭



由令(附金屬由令墊圈)

